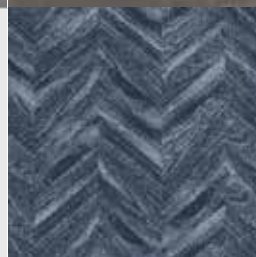
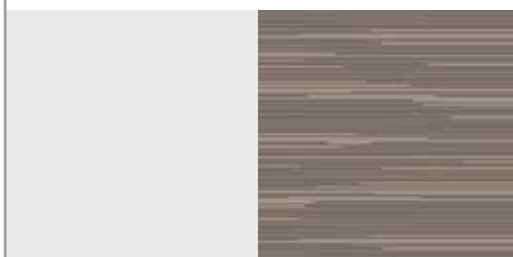
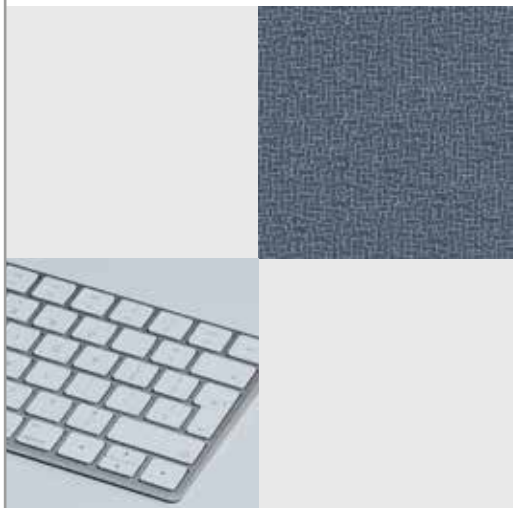


quick start TILES



quick start

TILES

de Quick Start Tiles bietet 36 zeitlose Designs in je 5 ruhigen Farbvarianten für das Büro. Erhältlich in den Größen 60 × 60 cm, 120 × 120 cm und 180 × 180 cm.

en Quick start TILES offers 36 timeless designs in 5 subtle shades for the office. Available in sizes 60 × 60 cm, 120 × 120 cm and 180 × 180 cm.

fr Quick start TILES propose 36 modèles intemporels dans 5 coloris doux pour le bureau. Disponible dans les tailles 60 × 60 cm, 120 × 120 cm et 180 × 180 cm.



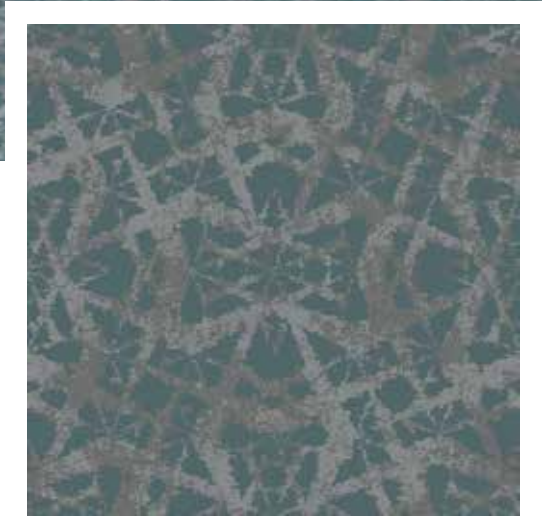
- 770 g/m² Markenpolyamid für höchsten Anspruch
- Produziert mit modernster Chromojet-Technologie
- 36 Designs aller Art
- 5 Farboptionen pro Design
- Unkomplizierte Auswahl
- Einfach zu bestellen
- Schneller Musterservice
- Kurze Lieferzeiten
- Wettbewerbsfähige Preise

- 770 g/m² branded polyamide to meet the highest standards
- Manufactured with the latest Chromojet technology
- 36 designs of all sorts
- 5 colour choices per design
- Uncomplicated selection
- Easy to order
- Quick sample service
- Short delivery times
- Competitive prices

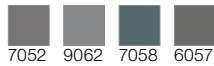
- Polyamide de marque 770 g / m² répondant au plus haut niveau d'exigence
- Fabriqué avec la dernière technologie Chromojet
- 36 modèles de toutes sortes
- 5 choix de coloris différents par modèle
- Une sélection simple
- Facile à commander
- Un envoi d'échantillon rapide
- Des délais de livraison courts
- Des prix compétitifs



F63-03A



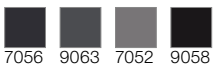
F41-05A



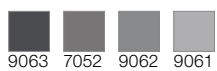
60er Fliesen, rapportgenau
60 x 60 tiles, critical cut
Dalles 60 x 60 cm, avec raccord



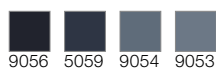
F41-01A



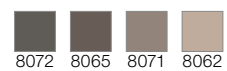
F41-02A

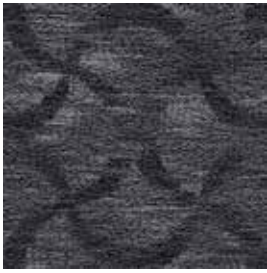


F41-03A



F41-04A





F42-01A



7056 9063 7052 9062 9058



F42-02A



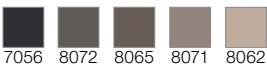
7056 9063 7052 9062 9061



9050



F42-04A



7056 8072 8065 8071 8062



8060



F42-05A

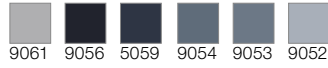


7056 9062 9058 7058 6057



6050

F42-03A

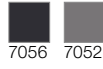


9061 9056 5059 9054 9053 9052

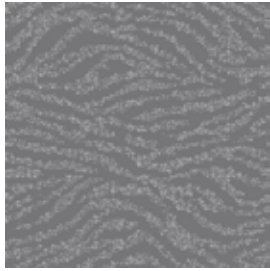
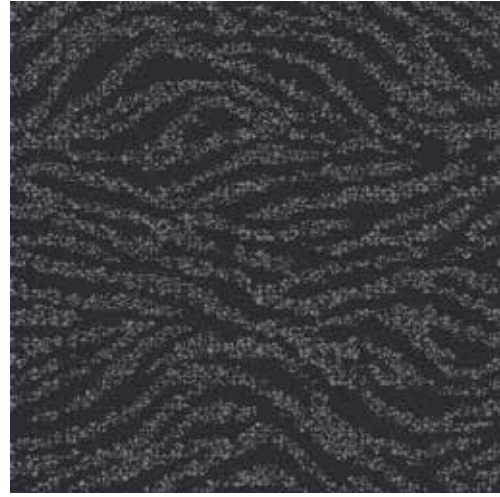
60er Fliesen, rapportgenau
60 x 60 tiles, critical cut
Dalles 60 x 60 cm, avec raccord



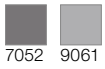
F43-01A



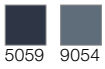
60er Fliesen, rapportgenau
60 x 60 tiles, critical cut
Dalles 60 x 60 cm, avec raccord



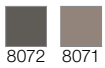
F43-02A



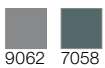
F43-03A



F43-04A

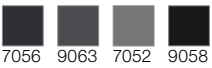


F43-05A

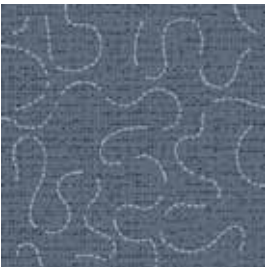
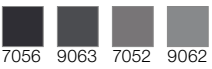




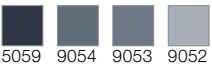
F44-01A



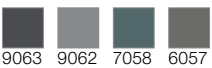
F44-02A



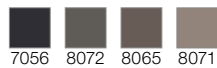
F44-03A



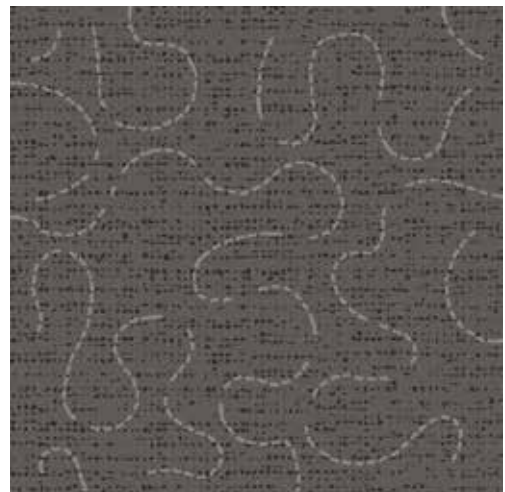
F44-05A



F44-04A



60er Fliesen, rapportgenau
60 x 60 tiles, critical cut
Dalles 60 x 60 cm, avec raccord

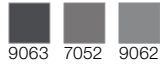




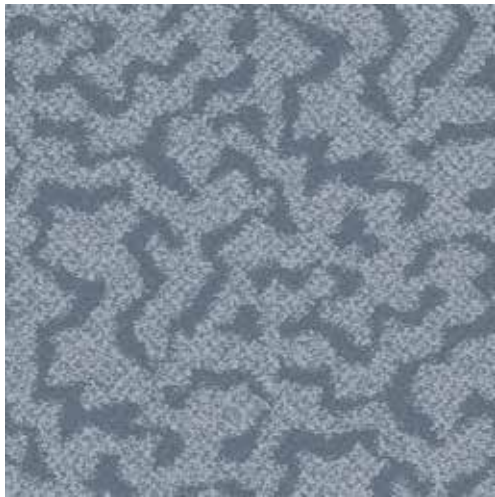
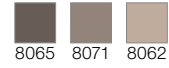
F45-01A



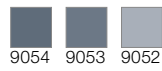
F45-02A



F45-04A



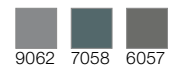
F45-03A



60er Fliesen, rapportgenau
60 x 60 tiles, critical cut
Dalles 60 x 60 cm, avec raccord



F45-05A





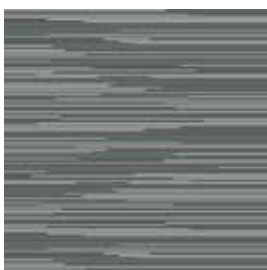
F46-01A



F46-02A



F46-03A



F46-05A



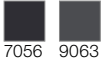
F46-04A



60er Fliesen, rapportgenau
60 x 60 tiles, critical cut
Dalles 60 x 60 cm, avec raccord



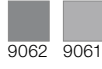
F47-01A



7056 9063



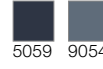
F47-02A



9062 9061



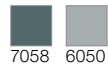
F47-03A



5059 9054



F47-05A

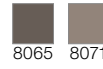


7058 6050

60er Fliesen, rapportgenau
60 x 60 tiles, critical cut
Dalles 60 x 60 cm, avec raccord

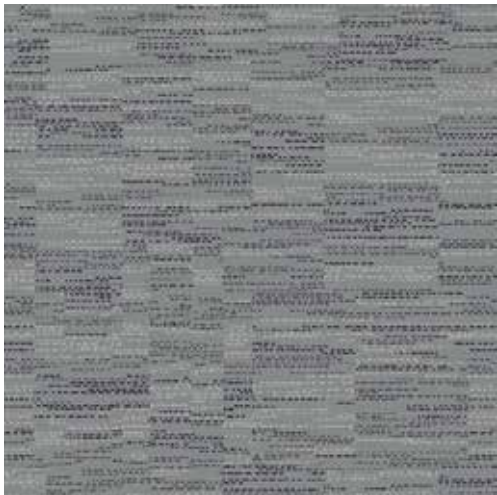


F47-04A

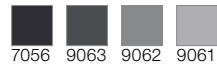


8065 8071





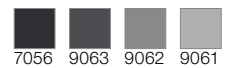
F48-02A



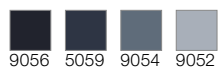
60er Fliesen, rapportgenau
 60 x 60 tiles, critical cut
 Dalles 60 x 60 cm, avec raccord



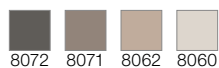
F48-01A



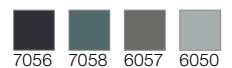
F48-03A



F48-04A

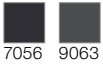


F48-05A

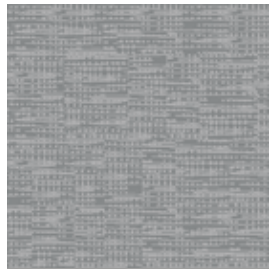




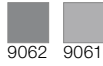
F49-01A



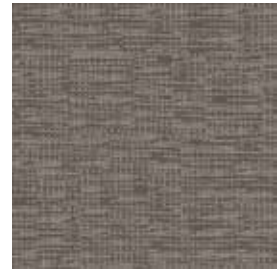
7056 9063



F49-02A



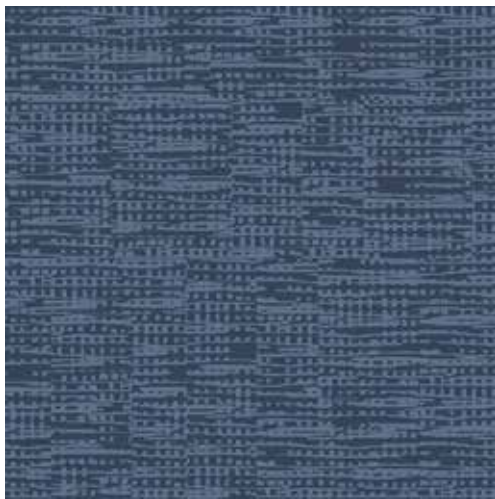
9062 9061



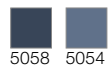
F49-04A



8072 8071



F49-03A

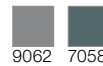


5058 5054

60er Fliesen, rapportgenau
60 x 60 tiles, critical cut
Dalles 60 x 60 cm, avec raccord

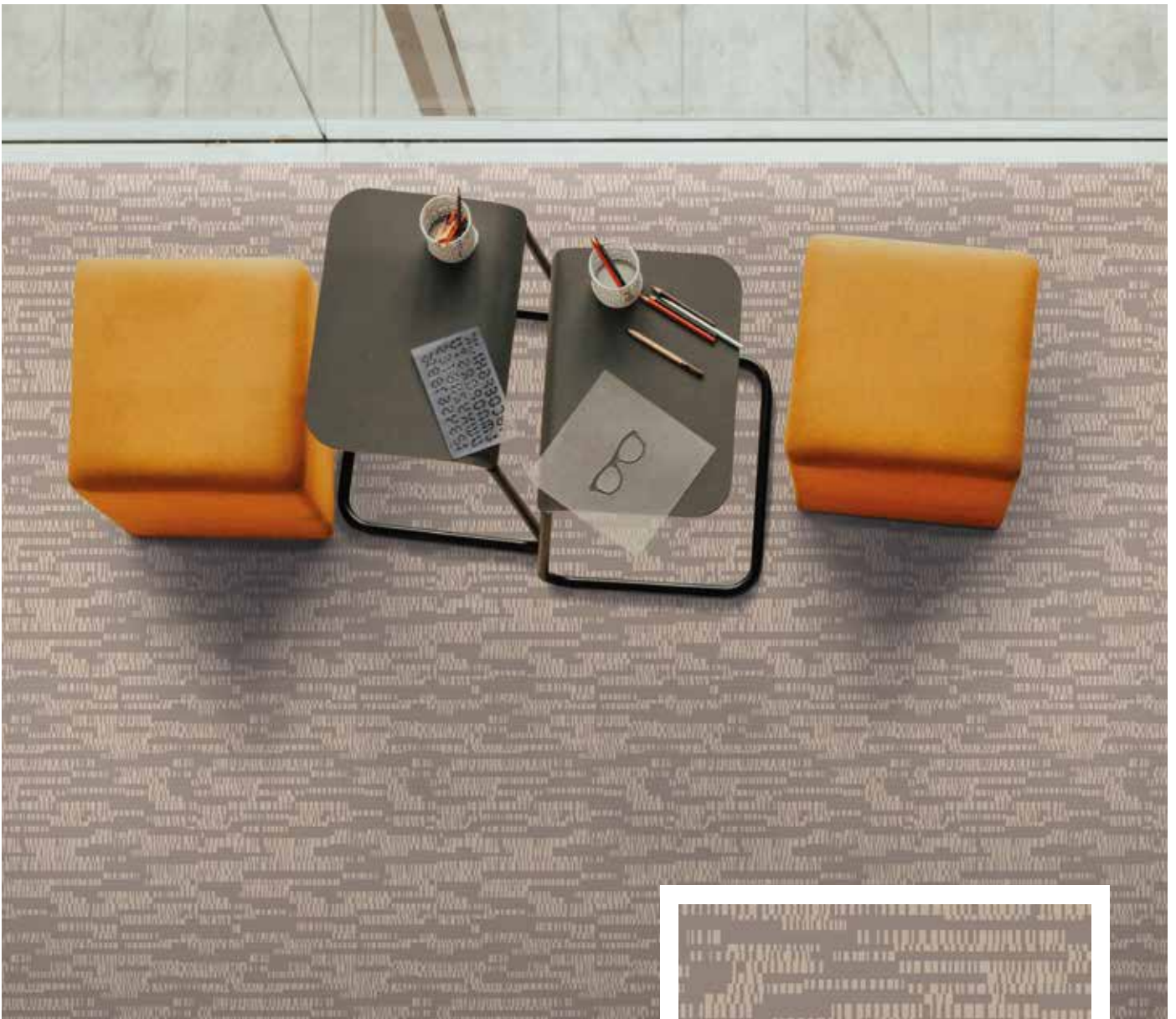


F49-05A

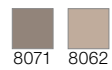


9062 7058





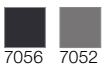
F50-04A



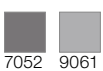
60er Fliesen, rapportgenau
60 x 60 tiles, critical cut
Dalles 60 x 60 cm, avec raccord



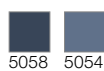
F50-01A



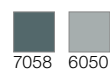
F50-02A



F50-03A

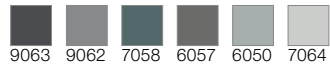


F50-05A





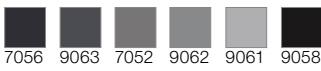
F51-05A



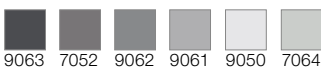
60er Fliesen, rapportgenau
60 x 60 tiles, critical cut
Dalles 60 x 60 cm, avec raccord



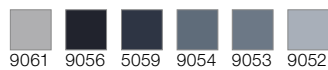
F51-01A



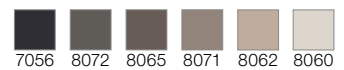
F51-02A



F51-03A

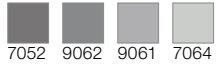


F51-04A

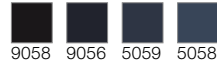




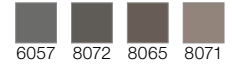
F52-02A



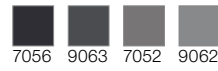
F52-03A



F52-04A



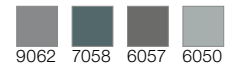
F52-01A



60er Fliesen, rapportgenau
60 x 60 tiles, critical cut
Dalles 60 x 60 cm, avec raccord

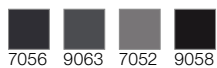


F52-05A

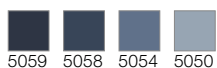




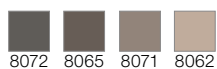
F53-01A



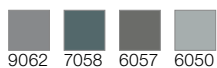
F53-03A



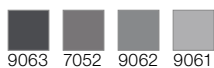
F53-04A



F53-05A



F53-02A

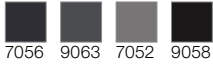


60er Fliesen, rapportgenau
60 x 60 tiles, critical cut
Dalles 60 x 60 cm, avec raccord

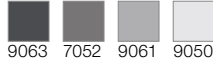




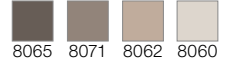
F54-01A



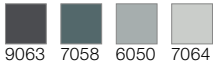
F54-02A



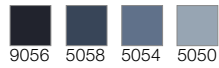
F54-04A



F54-05A



F54-03A

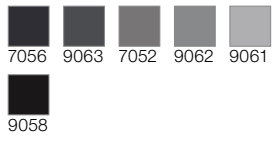


60er Fliesen, rapportgenau
60 x 60 tiles, critical cut
Dalles 60 x 60 cm, avec raccord

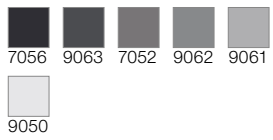




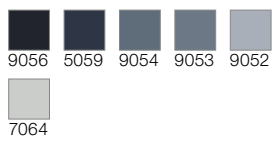
F55-01A



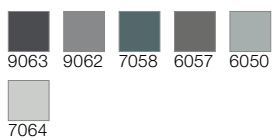
F55-02A



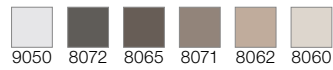
F55-03A



F55-05A



F55-04A

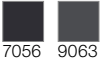


60er Fliesen, rapportgenau
60 x 60 tiles, critical cut
Dalles 60 x 60 cm, avec raccord





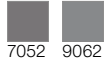
F56-01A



7056 9063



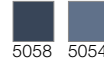
F56-02A



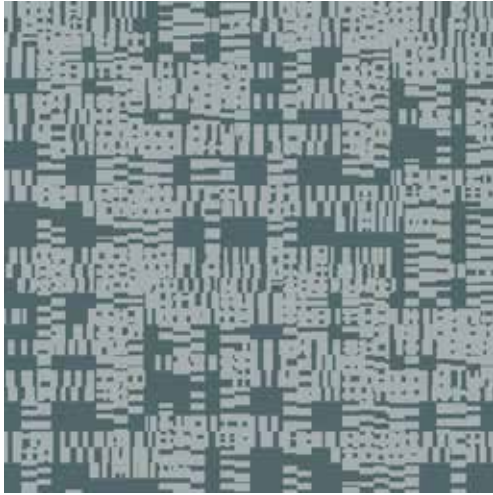
7052 9062



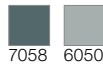
F56-03A



5058 5054



F56-05A



7058 6050

60er Fliesen, rapportgenau
60 x 60 tiles, critical cut
Dalles 60 x 60 cm, avec raccord



F56-04A

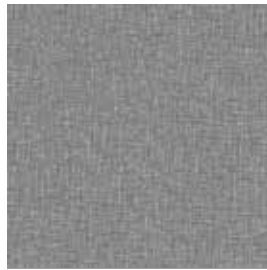


8072 8071

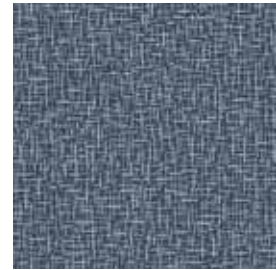




F57-01A



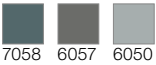
F57-02A



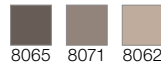
F57-03A



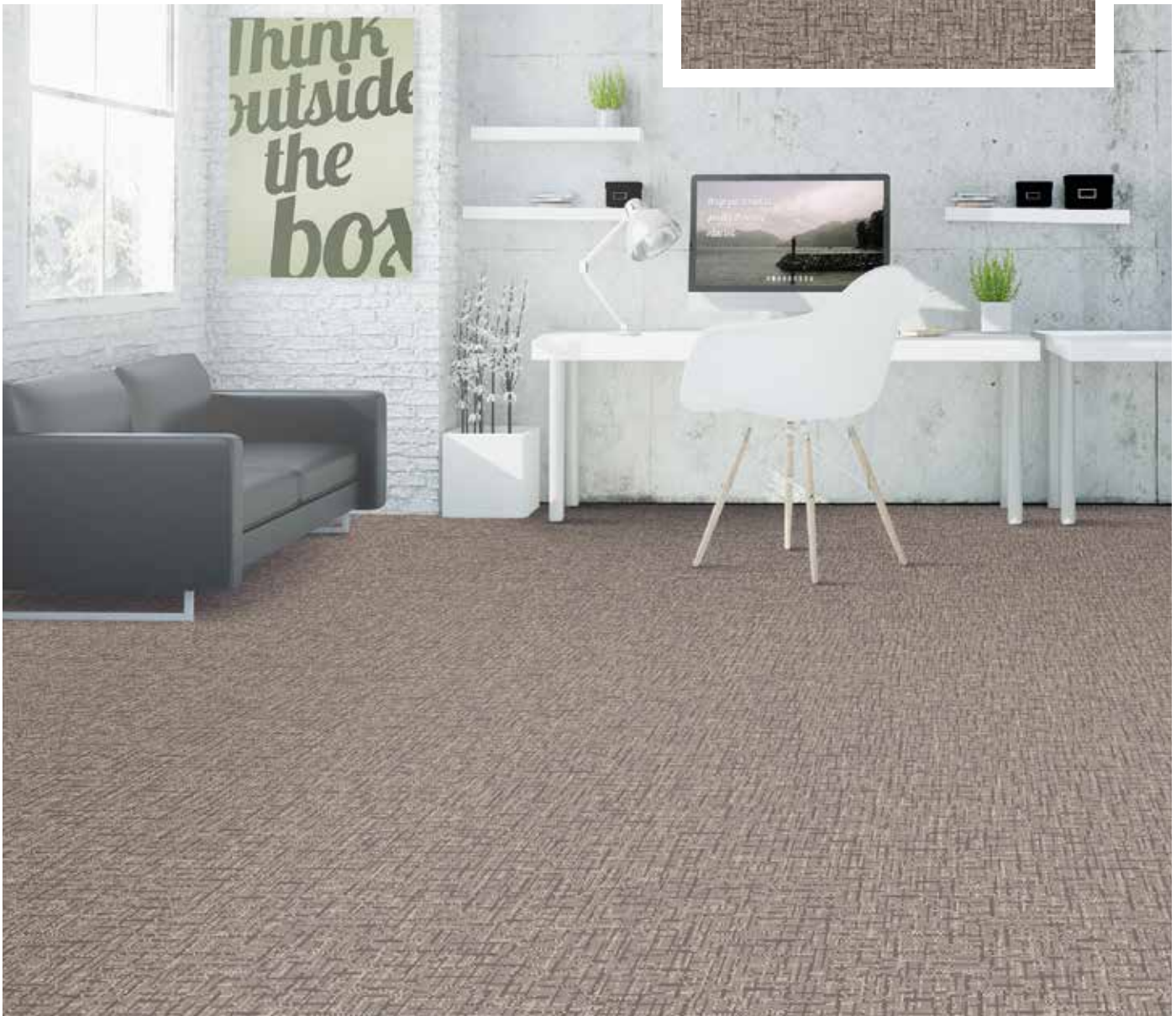
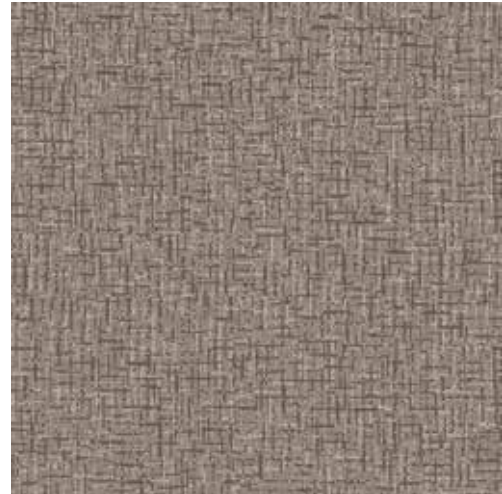
F57-05A



F57-04A

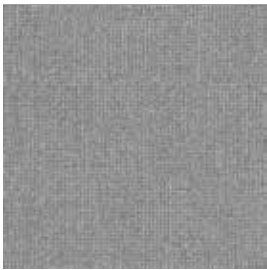


60er Fliesen, rapportgenau
60 x 60 tiles, critical cut
Dalles 60 x 60 cm, avec raccord





F58-01A



F58-02A



F58-04A



F58-05A

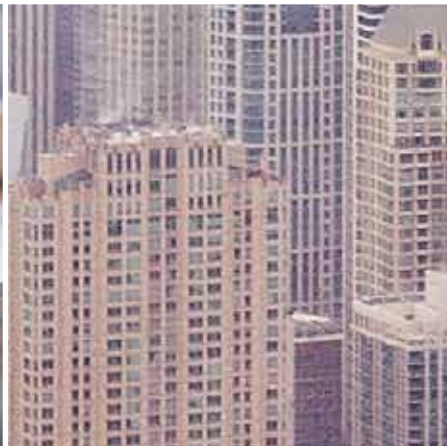
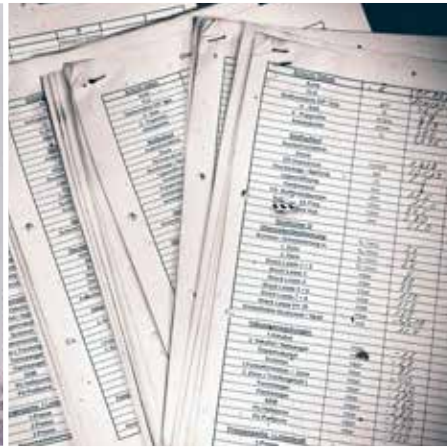


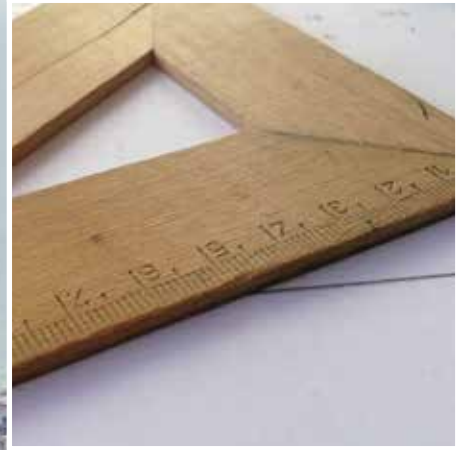
F58-03A



60er Fliesen, rapportgenau
60 x 60 tiles, critical cut
Dalles 60 x 60 cm, avec raccord









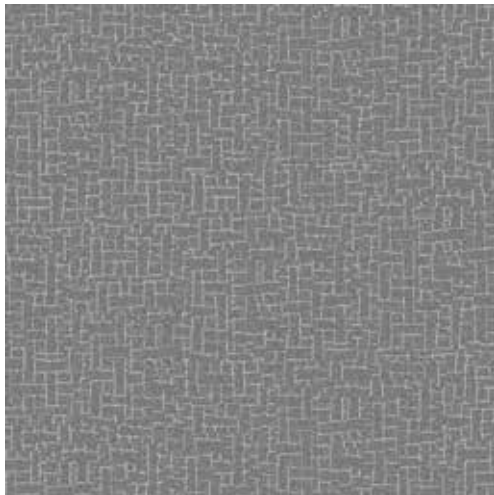
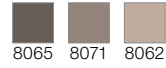
F59-01A



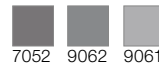
F59-03A



F59-04A



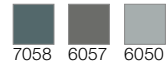
F59-02A



60er Fliesen, rapportgenau
60 x 60 tiles, critical cut
Dalles 60 x 60 cm, avec raccord

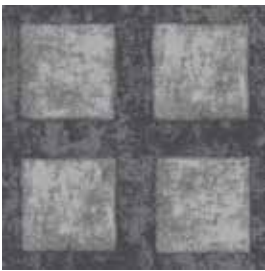
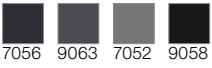


F59-05A

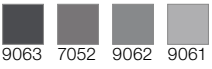




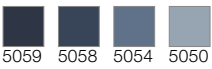
F60-01A



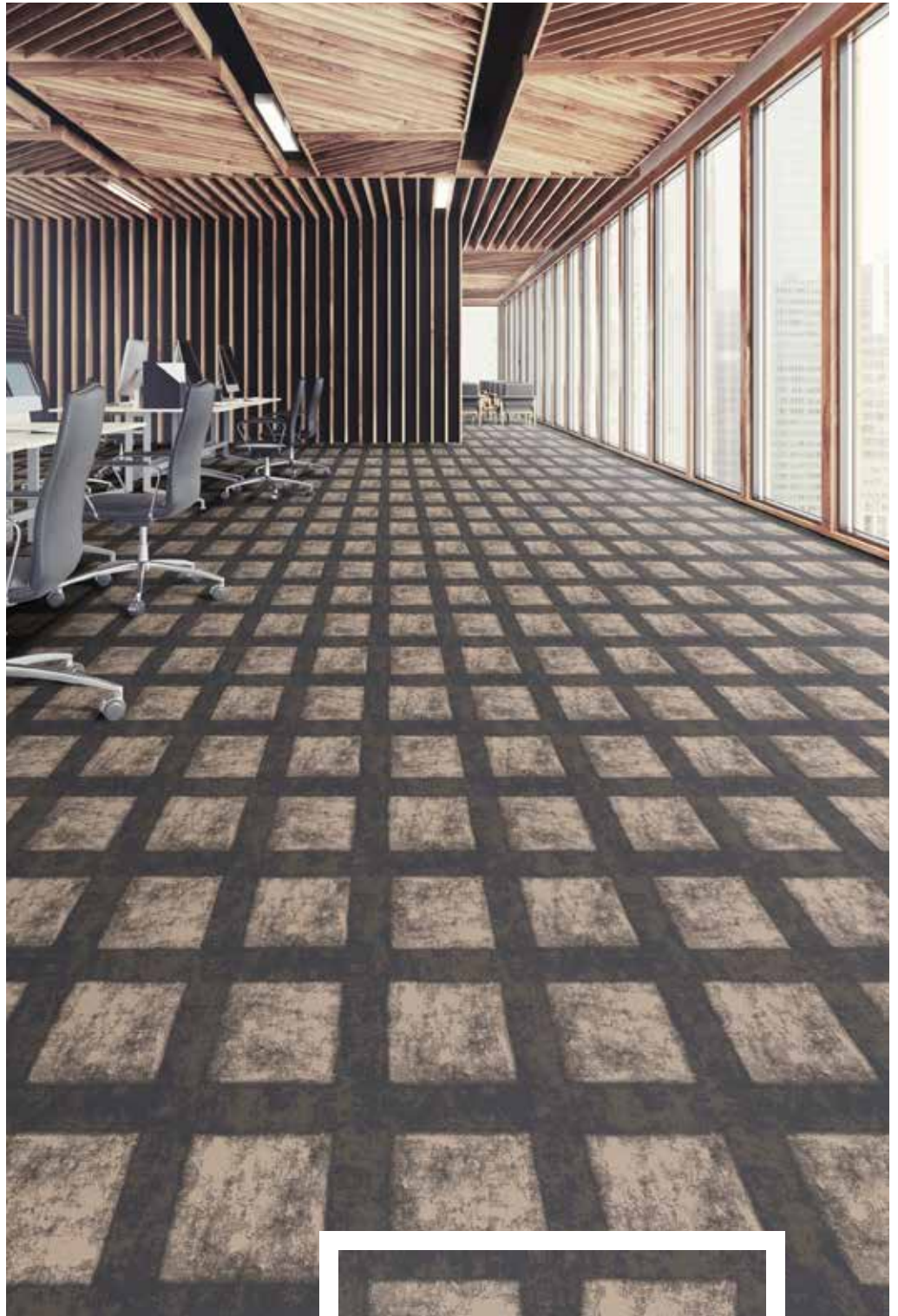
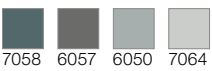
F60-02A



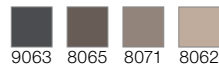
F60-03A



F60-05A

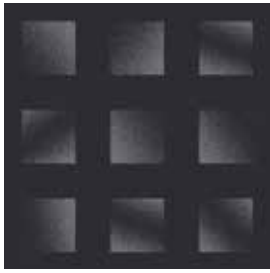


F60-04A

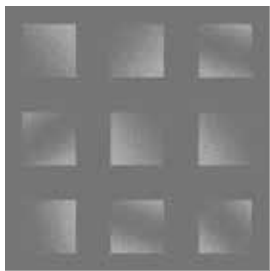


60er Fliesen, rapportgenau
60 x 60 tiles, critical cut
Dalles 60 x 60 cm, avec raccord





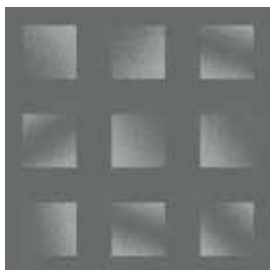
F61-01A



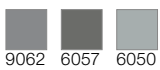
F61-02A



F61-04A



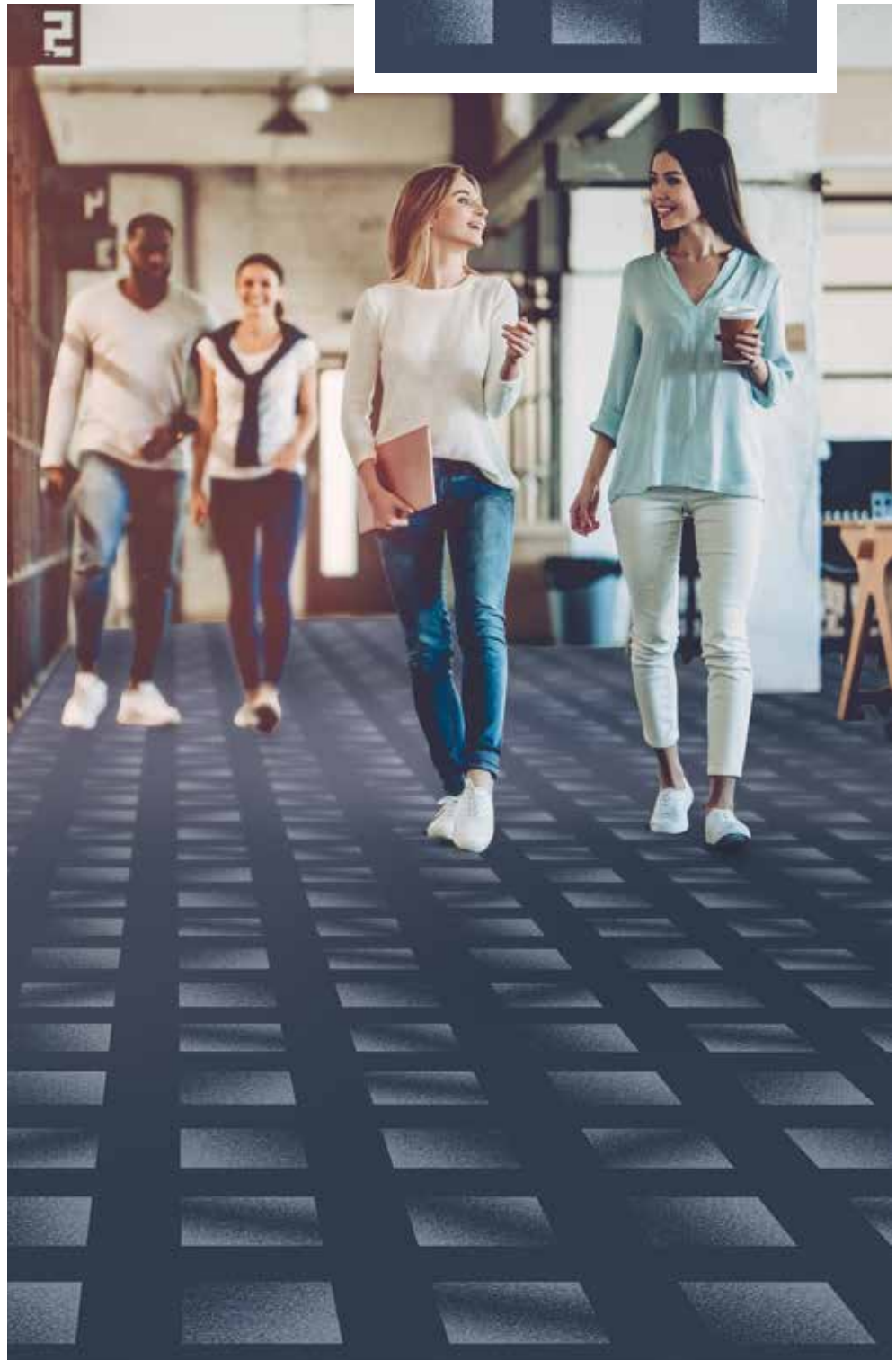
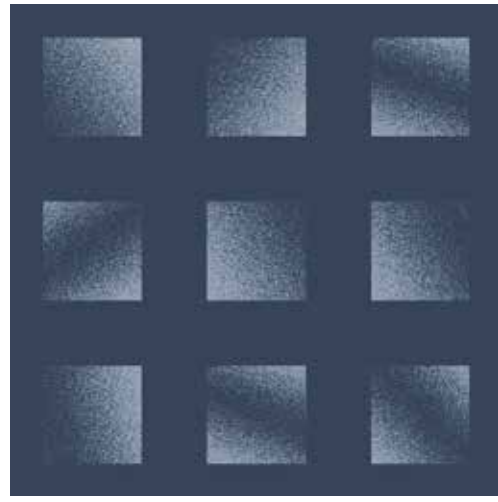
F61-05A



F61-03A



60er Fliesen, rapportgenau
60 x 60 tiles, critical cut
Dalles 60 x 60 cm, avec raccord





F62-01A



7056 9063 7052 9062 9061



F62-02A



7052 9062 9061 9050 8060



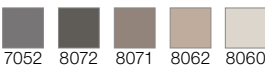
F62-03A



5059 9054 9053 9052 7064



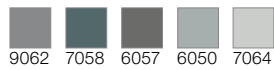
F62-04A



7052 8072 8071 8062 8060

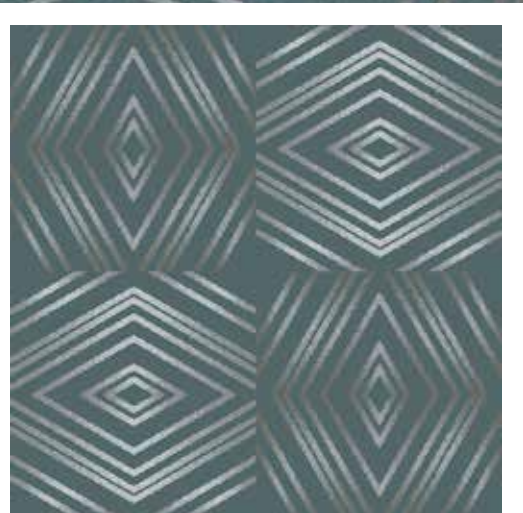


F62-05A



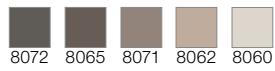
9062 7058 6057 6050 7064

60er Fliesen, rapportgenau
60 x 60 tiles, critical cut
Dalles 60 x 60 cm, avec raccord

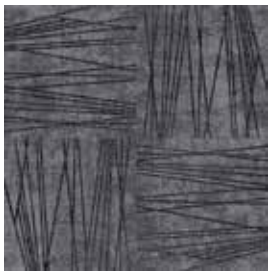




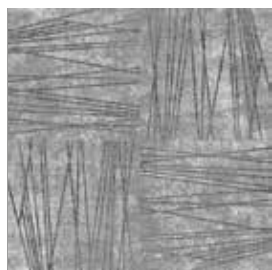
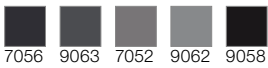
F63-04A



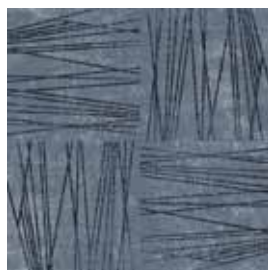
60er Fliesen, rapportgenau
60 x 60 tiles, critical cut
Dalles 60 x 60 cm, avec raccord



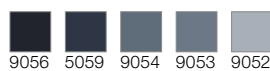
F63-01A



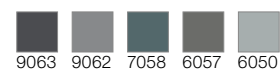
F63-02A

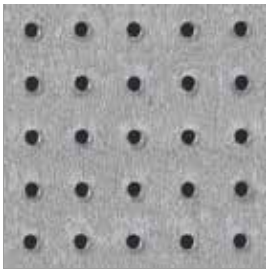


F63-03A

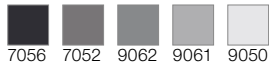


F63-05A

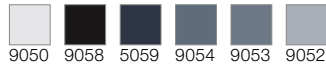




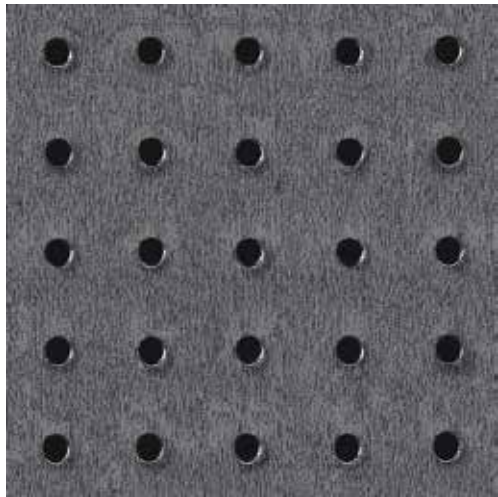
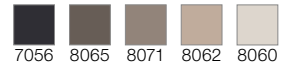
F64-02A



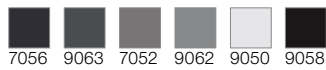
F64-03A



F64-04A



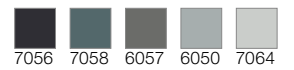
F64-01A



60er Fliesen, rapportgenau
60 x 60 tiles, critical cut
Dalles 60 x 60 cm, avec raccord

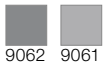


F64-05A





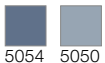
F65-02A



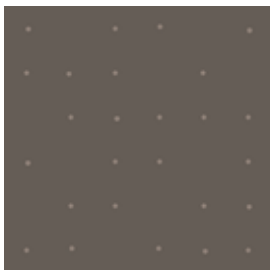
9062 9061



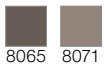
F65-03A



5054 5050



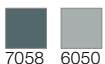
F65-04A



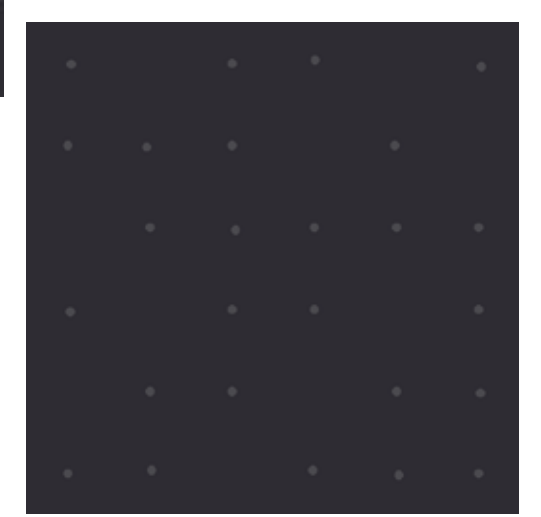
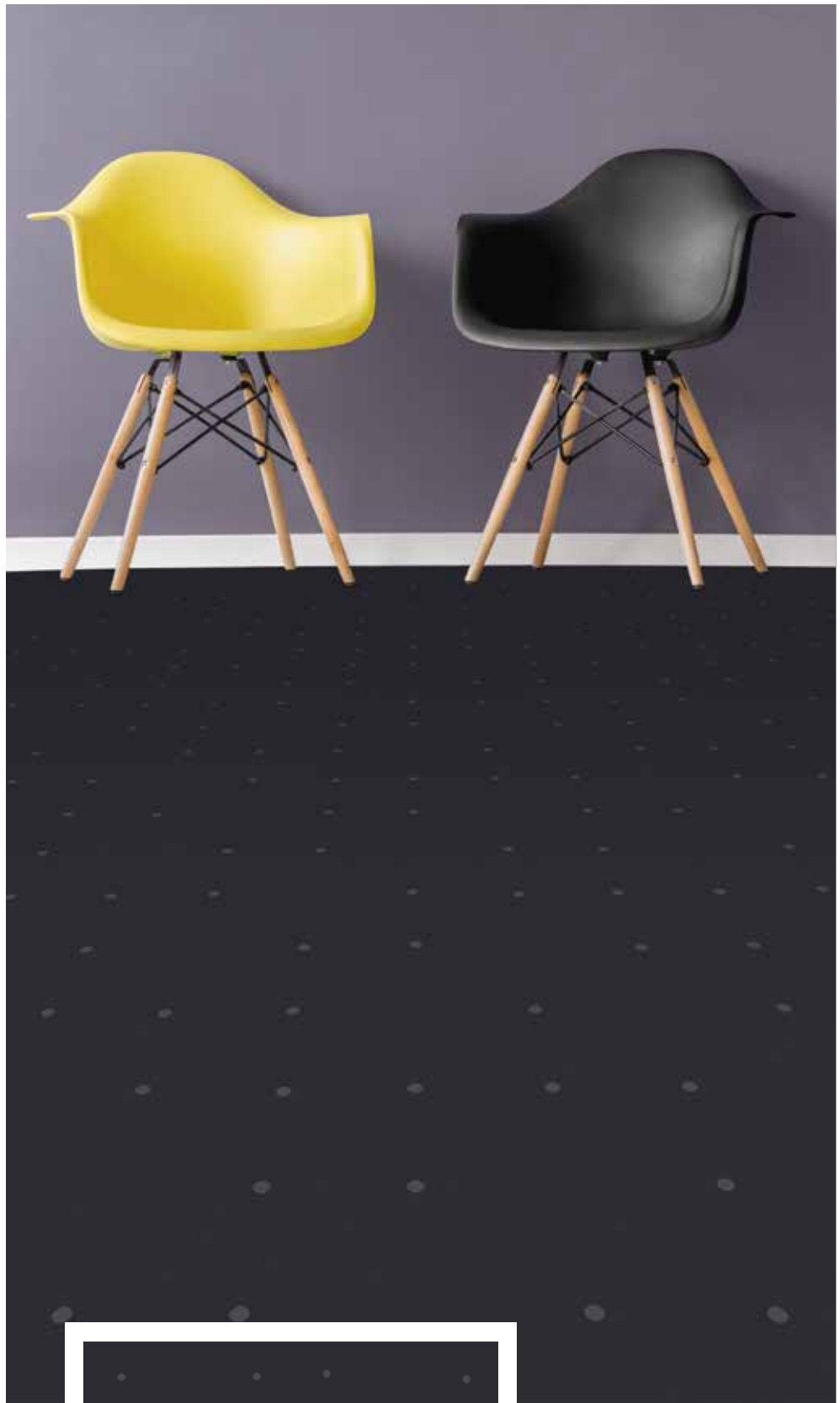
8065 8071



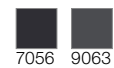
F65-05A



7058 6050

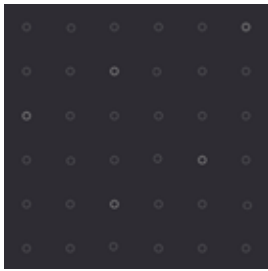


F65-01A



7056 9063

60er Fliesen, rapportgenau
60 x 60 tiles, critical cut
Dalles 60 x 60 cm, avec raccord



F66-01A



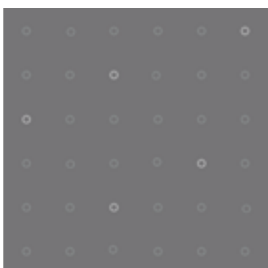
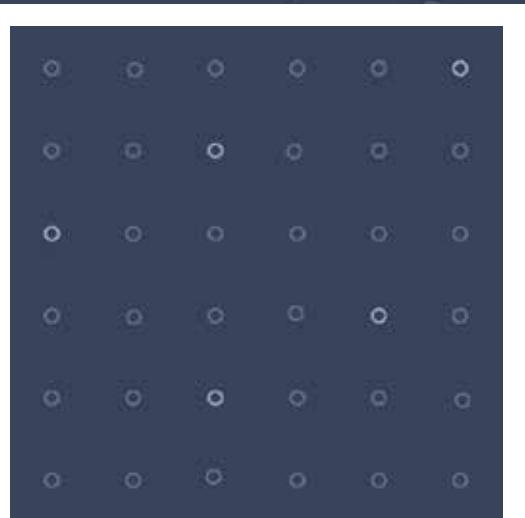
7056 9063 7052

F66-03A



5058 5054 5050

60er Fliesen, rapportgenau
60 x 60 tiles, critical cut
Dalles 60 x 60 cm, avec raccord



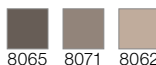
F66-02A



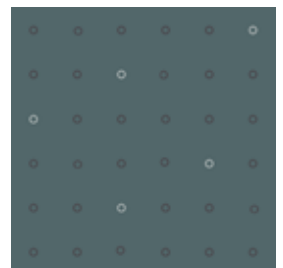
7052 9062 9061



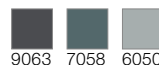
F66-04A



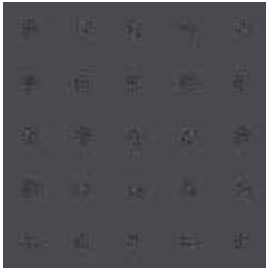
8065 8071 8062



F66-05A



9063 7058 6050



F67-01A



9063 7052 9058



F67-02A



9063 9062 9061



F67-03A



5069 9054 9052

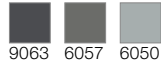


F67-04A



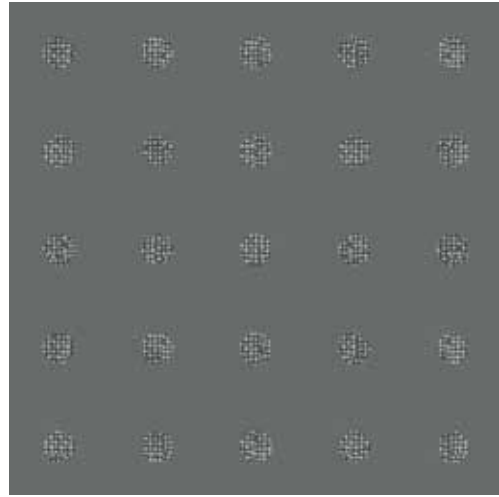
8072 8071 8062

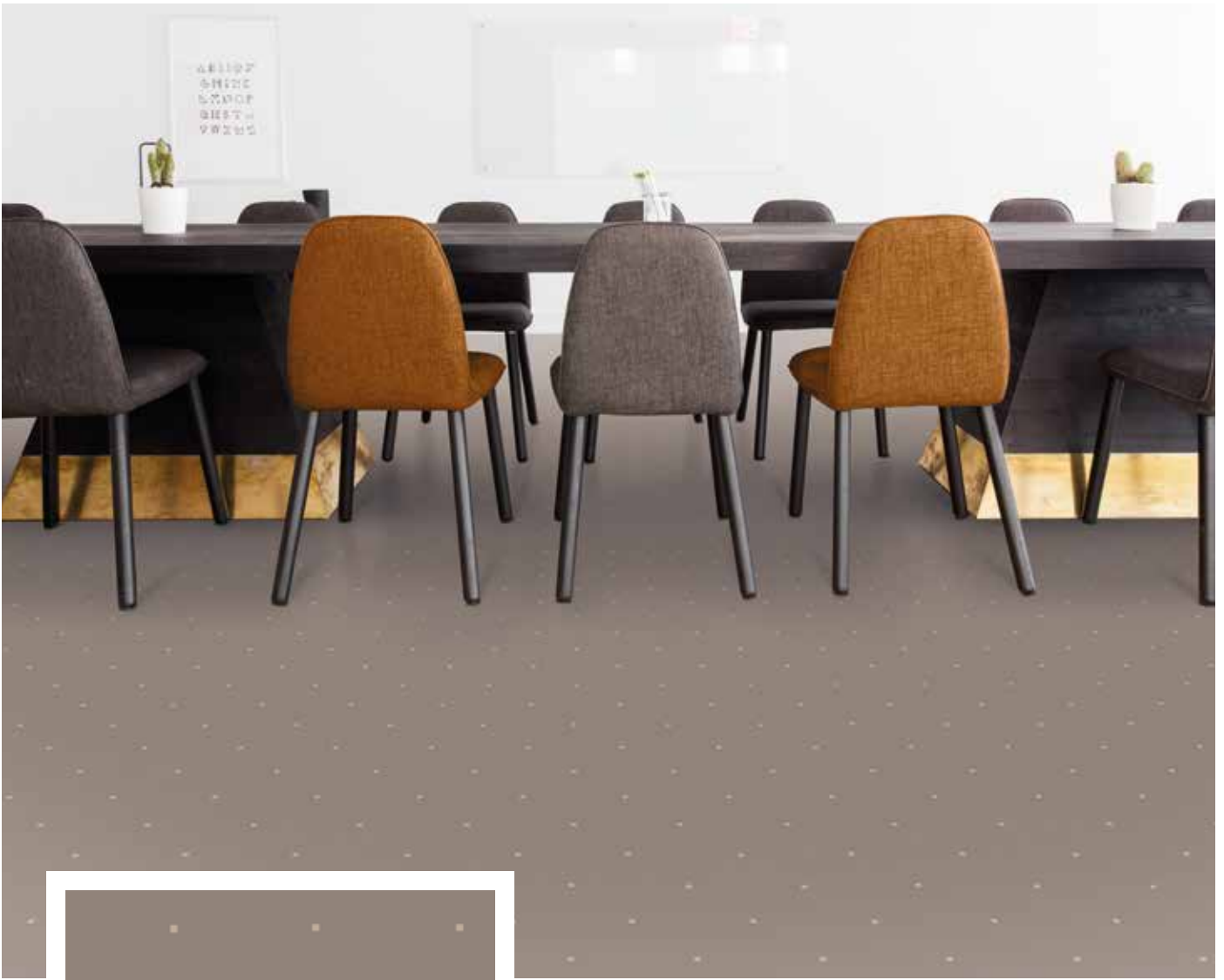
F67-05A



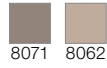
9063 6057 6050

60er Fliesen, rapportgenau
60 x 60 tiles, critical cut
Dalles 60 x 60 cm, avec raccord

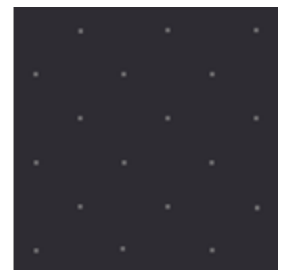




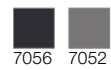
F68-04A



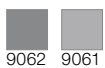
60er Fliesen, rapportgenau
60 x 60 tiles, critical cut
Dalles 60 x 60 cm, avec raccord



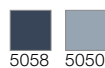
F68-01A



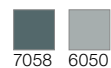
F68-02A

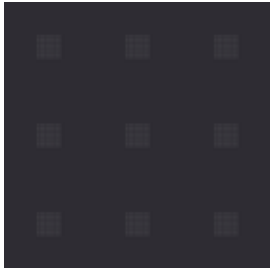


F68-03A

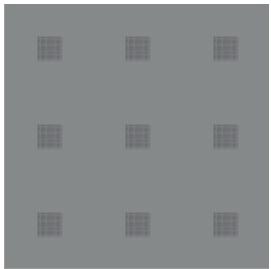
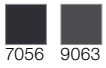


F68-05A

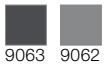




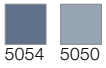
F69-01A



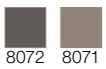
F69-02A



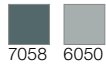
F69-03A



F69-04A



F69-05A



60er Fliesen, rapportgenau
60 x 60 tiles, critical cut
Dalles 60 x 60 cm, avec raccord





F70-01A



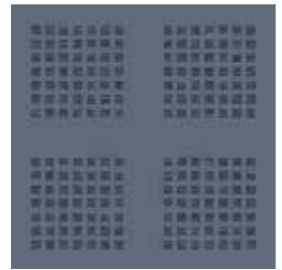
7056 9063 7052



F70-02A



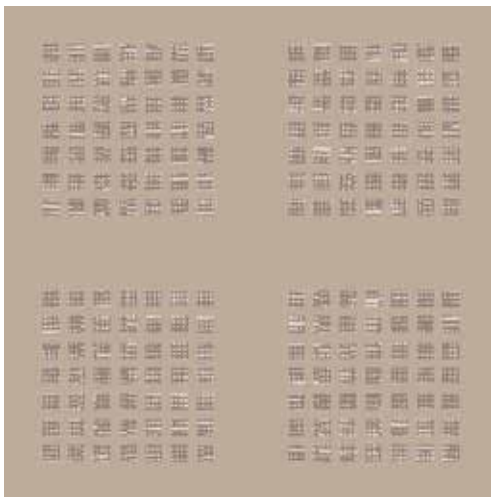
7052 9062 9061



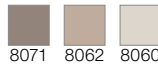
F70-03A



5059 9054 5054

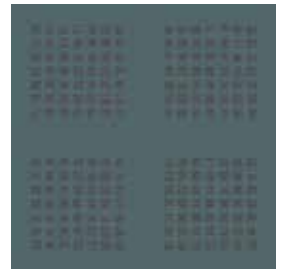


F70-04A

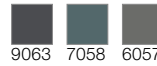


8071 8062 8060

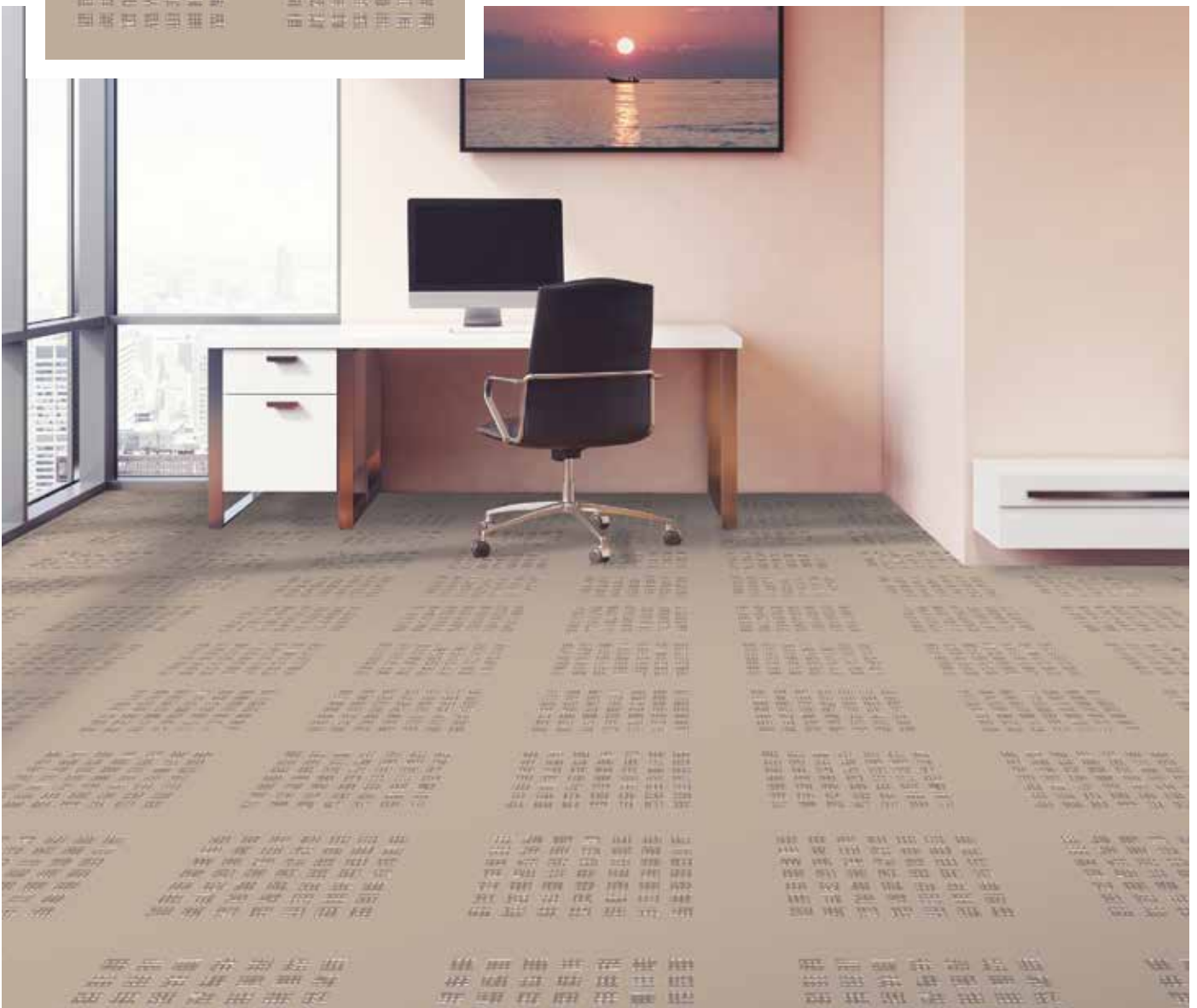
60er Fliesen, rapportgenau
60 x 60 tiles, critical cut
Dalles 60 x 60 cm, avec raccord



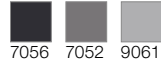
F70-05A



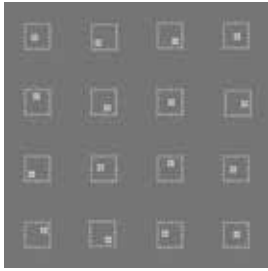
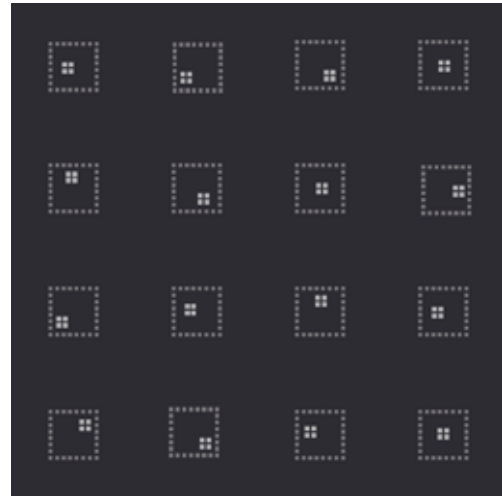
9063 7058 6057



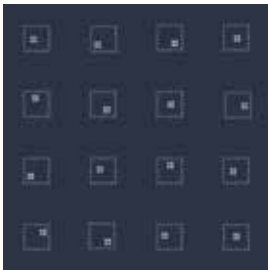
F71-01A



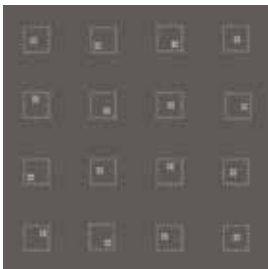
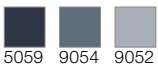
60er Fliesen, rapportgenau
60 x 60 tiles, critical cut
Dalles 60 x 60 cm, avec raccord



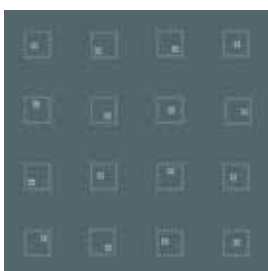
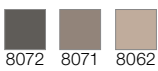
F71-02A



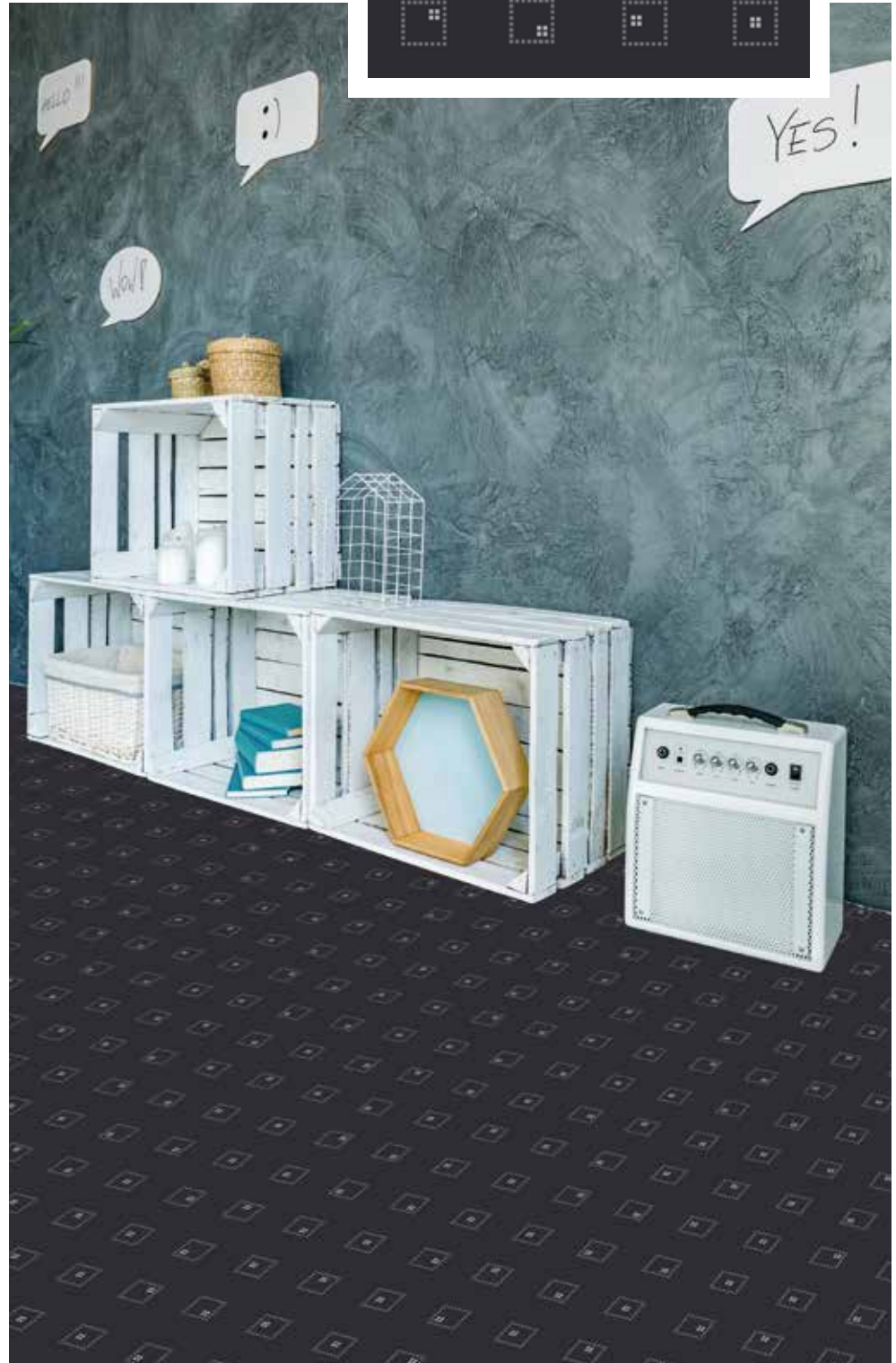
F71-03A



F71-04A



F71-05A

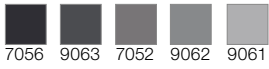




F72-01A



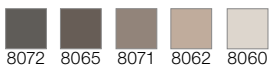
F72-02A



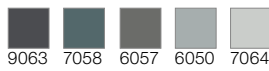
F72-03A



F72-04A



F72-05A

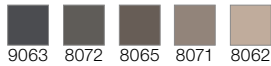


60er Fliesen, rapportgenau
60 x 60 tiles, critical cut
Dalles 60 x 60 cm, avec raccord





F73-04A



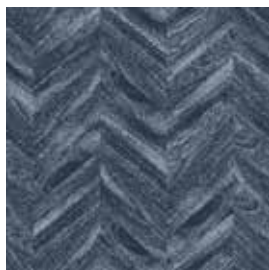
60er Fliesen, rapportgenau
60 x 60 tiles, critical cut
Dalles 60 x 60 cm, avec raccord



F73-01A



F73-02A

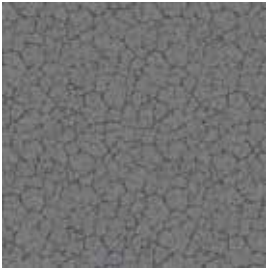


F73-03A

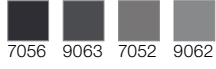


F73-05A

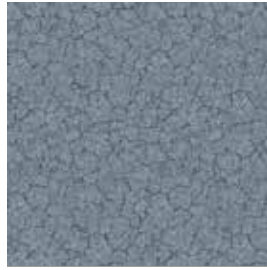




F74-01A



7056 9063 7052 9062



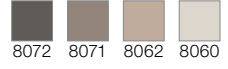
F74-03A



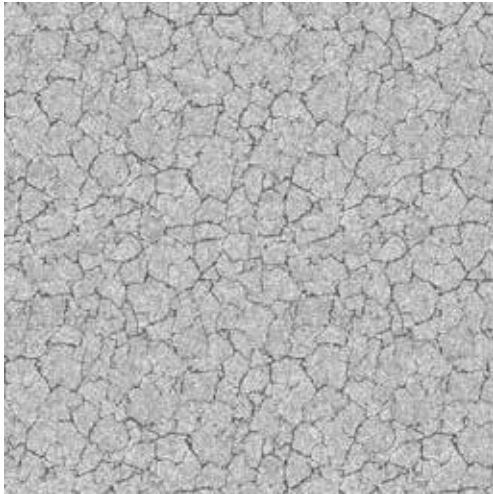
5059 9054 9053 9052



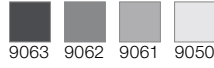
F74-04A



8072 8071 8062 8060

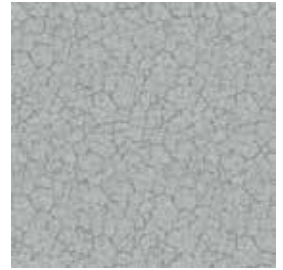


F74-02A

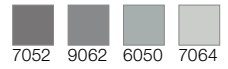


9063 9062 9061 9050

60er Fliesen, rapportgenau
60 x 60 tiles, critical cut
Dalles 60 x 60 cm, avec raccord



F74-05A



7052 9062 6050 7064





F75-01A



9058 9056 5059



F75-03A



5059 5058 5054



F75-04A



8065 8071 8062



F75-05A



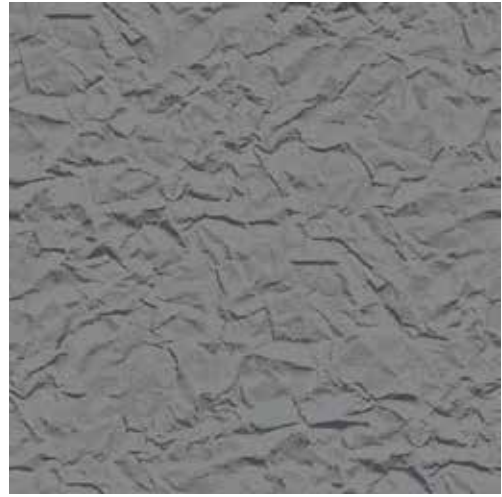
9062 9061 7064

F75-02A



9063 7052 9062

60er Fliesen, rapportgenau
60 x 60 tiles, critical cut
Dalles 60 x 60 cm, avec raccord





F76-01A



F76-02A



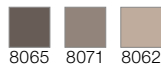
F76-03A



F76-05A



F76-04A



60er Fliesen, rapportgenau
60 x 60 tiles, critical cut
Dalles 60 x 60 cm, avec raccord



FLIESENGRÖSSEN | TILE SIZES | TAILLES DE CARREAUX

Bestellnummer der Fliesengrößen

Order numbers of tile sizes

Numéros de commande des tailles de carreaux

60 × 60 cm:

F63-04A

120 × 120 cm:

F63-01B

180 × 180 cm:

F63-05C



FARBEN | COLOURS | COULEURS



KF 7056



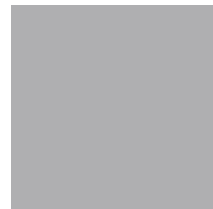
KF 9063



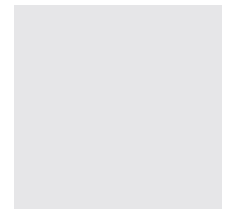
KF 7052



KF 9062



KF 9061



KF 9050



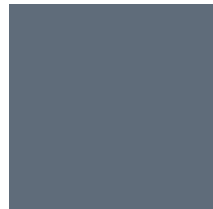
KF 9058



KF 9056



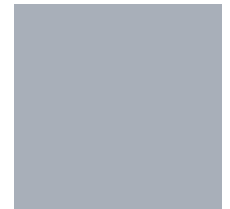
KF 5059



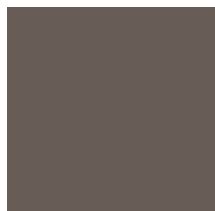
KF 9054



KF 9053



KF 9052



KF 8065



KF 8072



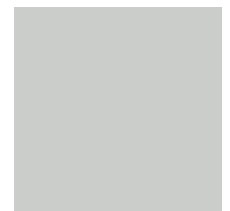
KF 6057



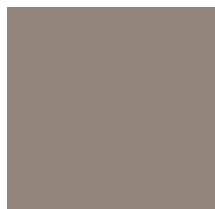
KF 7058



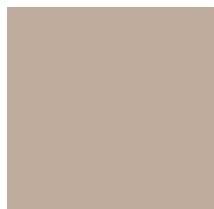
KF 6050



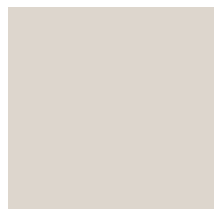
KF 7064



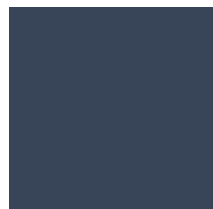
KF 8071



KF 8062



KF 8060



KF 5058



KF 5054



KF 5050

Bitte beachten Sie, dass die in dieser Kollektion dargestellten Farben nur annähernd den tatsächlichen Teppichbodenfarben entsprechen. Verwenden Sie bitte unsere original Farbmuster.

Please note that colours in this printed brochure are approximate. For correct colours please refer to our colour samples.

Veillez noter que les couleurs représentées dans cette collection sont approximatives par rapport aux couleurs réelles. S'il vous plaît utiliser notre nuancier original.

Achtung: aus technischen Gründen ist ein Verspringen des Dessins von Fliese zu Fliese um ca. +/- 5mm nicht auszuschließen. Dies wird als Reklamationsgrund nicht anerkannt und ist ggf. vom Verleger auszugleichen.

Attention: For technical reasons we cannot completely exclude that the design skips from tile to tile by approx +/- 5 mm. This is not accepted as a reason for a claim and possibly has to be cleared by the layer.

Attention: Pour des raisons techniques un pose en quinconce de dessin de dalle à dalle doit être toléré autour de +/- 5 mm. Ca ne représente pas un motif de réclamation et doit être corrigé éventuellement par le poseur.

ARCADE SPEZIAL EASY LIFT 2,5 / DC 800 EASY LIFT 2,5

Warenkonstruktion Construction Structure		Tufting Glattvelour 1/10“ tufted cut pile non heatset 1/10“ Tufting Velours ras 1/10“
Mustergestaltung Design Dessin		Chromojet Druck Chromojet printed Impression jet d'encre
Polmaterial nach TKG Pile layer Nature de la fibre selon la TKG		100 % Polyamid 6 100 % Polyamide 6 100 % Polyamide 6
Tufting-Träger Primary backing Sous-couche tuftage		75 % PES / 25 % PA-Vlies 75 % PES / 25 % PA-non woven 75 % polyester / 25 % non-tissé PA
Rückenausrüstung Secondary backing Dossier d'envers		Easy Lift 2,5 PES - Abdeckvlies Easy Lift 2,5 PES non woven Easy Lift 2,5 PES non-tissé
Lieferform Available size Format de livraison	Fliesen tiles and modules carreaux	Größe nach Anforderung size on demand dimension sur demande
Verwendungsbereich Wear rating Domaine d'application	EN 1307	gewerblich - stark (33) commercial - heavy (33) commercial - élevé (33)
Komfortwert Comfort rating Valeur de confort	EN 1307	LC 2
Flächengewicht Total weight Grammage total	ISO 8543	ca. 2764 g/m ² app. 2764 g/m ²
Gesamtdicke Total thickness Épaisseur totale	ISO 1765	ca. 6,5 mm app. 6,5 mm
Poleinsatzgewicht Pile total yarn weight Poids du velours		ca. 770 g/m ² app. 770 g/m ²
Polschichtdicke Pile height above primary backing Épaisseur du velours	ISO 1766	ca. 4,1 mm app. 4,1 mm
Pol-Rohdichte Pile density Densité brute du velours	ISO 8543	ca. 0,12 g/cm ³ app. 0,12 g/cm ³
Noppenzahl Number of tufts Nombre de tufts	ISO 1763	ca. 316000 /m ² app. 316000 /m ²
Elektrostatistisches Verhalten Vertical resistance Comportement électrostatique	ISO 6356	≤ 2 kV
Bewertete Trittschallminderung Impact sound reduction Indice de réduction des bruits d'impact	ISO 140-8	ca. 29 dB app. 29 dB
Schallabsorptionsgrad α_w Sound absorption rate Coéfficient d'absobtion acoustique	ISO 354	ca. 0,15 app. 0,15
Wärmedurchlaßwiderstand Thermal resistance Résistivité thermique	ISO 8302	ca. 0,12 m ² K/W app. 0,12 m ² K/W
Prodis-Lizenz-Nummer Prodis-licence-number N° de licence Prodis		7CF81CC0
Brandverhalten Reaction to fire Comportement au feu	EN 13501	Cfl-s1
CE-Nummer CE-number numero CE		1658-CPR-3163
DoP-Nummer DoP-number numero DoP		0004
Lichtechtheit Colour fastness to light Stabilité à la lumière	DIN EN ISO 105 B02	≥ 5
Wasserechtheit Colour fastness to water Résistance à l'eau	DIN EN ISO 105 E01	≥ 4
Reibechtheit Colour fastness to rubbing Résistance à l'usure par friction	DIN EN ISO 105 X12	≥ 3-4



CARPET TILE GUIDE

HALBMOND

Halbmond Teppichwerke GmbH
Brückenstraße 1
D-08606 Oelsnitz (Vogtl.)
Tel.: +49 (0) 37 421 / 42-0
info@halbmond.de
www.halbmond.de

